

Registering Product Licenses with your XMetaL Licensing Server (XMLS)

Contents

Product license files.....3
Registering (adding) licenses.....4

Product license files

When you purchase an XMetaL product you will receive download instructions for that product's installer and a license file for that product. License files created for use with an XMetaL Licensing Server (XMLS) are named `customer-###.dat`. Registering this file adds seats for the products it contains into your XMLS. The XMLS will then grant usage to the corresponding XMetaL software your organization has installed.



Note: The ### portion of that filename represents a number associated with your purchase and may vary in length.

License files can include multiple licenses (aka: seats) for both per-seat and/or concurrent usage for one or more (different) products.

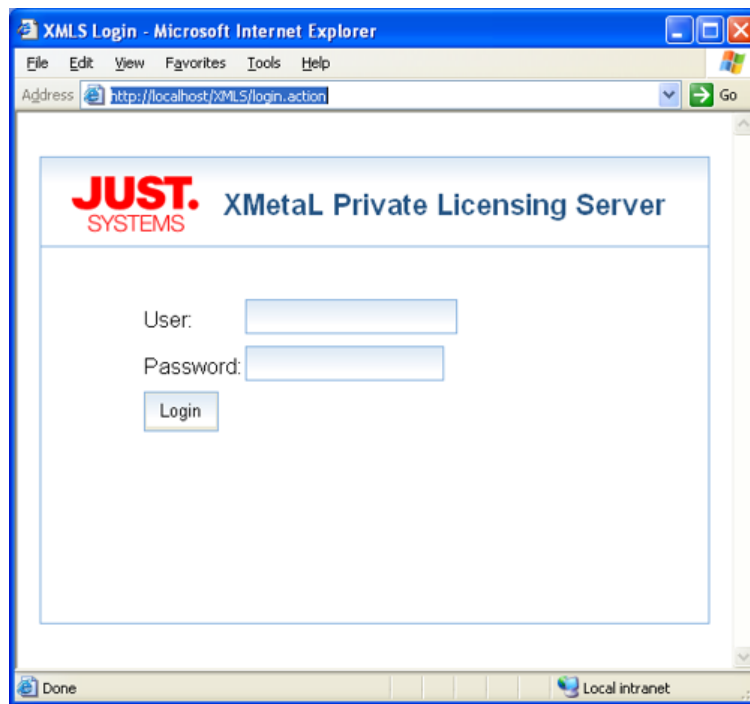
If you are running an XMetaL Licensing Server but do not have a `customer-###.dat` file please contact your JustSystems sales representative.


Registering (adding) licenses

Your XMLS must be installed and running. If it is not please refer to the document named XMetaL Licensing Server (XMLS) Installation and Registration.


XMLS is a web application that runs within an Apache Tomcat web server, allowing you to manage XMetaL product licenses from any browser that can access that server.

1. On the same server that is running your XMLS, launch a web browser and navigate to the following address: <http://localhost/XMLS>
You should see the following:

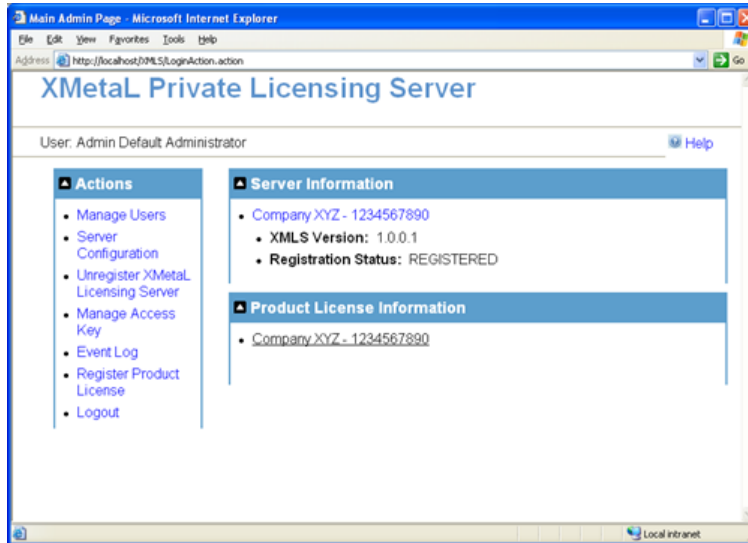


 **Note:** You may access XMLS from a different computer provided you know the name or IP address of the server.

2. Enter the *username* and *password* used to log in to your XMLS then click the button labeled **Login**.

 **Note:** The default value for both *username* and *password* is `admin`.

A screen similar to the following will be displayed:



Note: The section named Product License Information will contain more information if products have already been registered. If XMLS has just been installed no products will be listed.

3. Click the link labeled **Register Product License**.

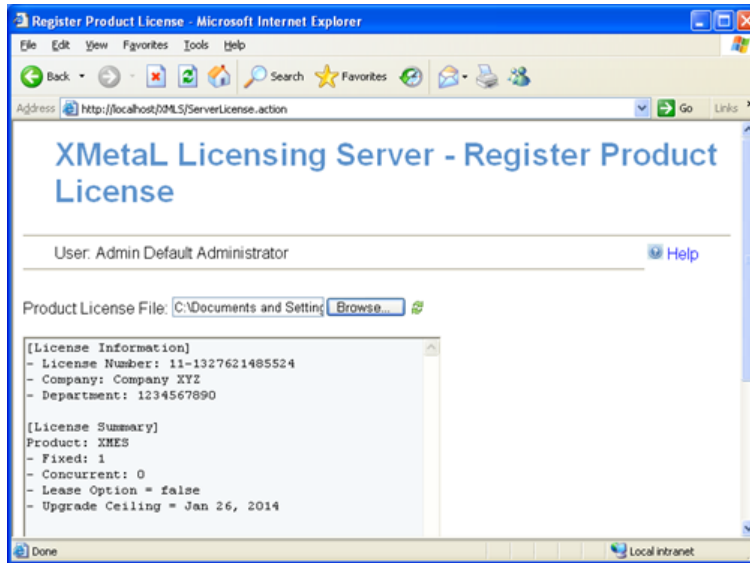


Note: If you have multiple license files you may need to register all of them. This would normally only be necessary if you are reinstalling your XMLS on a new server. In this case the license files should be registered in order by date, starting with the one you received first.

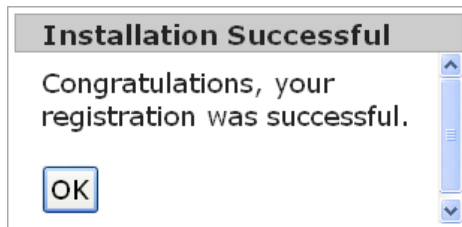
A screen similar to the following will be displayed:



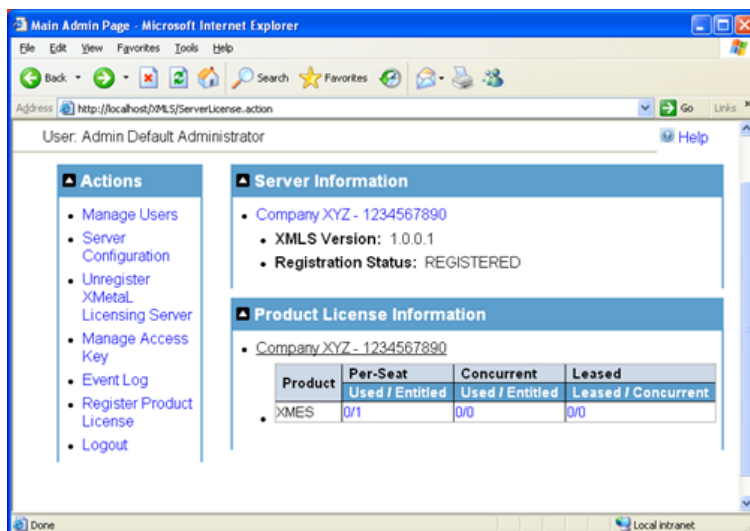
4. Browse to and select your `customer-###.dat` file.
Information about the licenses contained within the `customer-###.dat` will be displayed:



- Click the button labeled **Register**. The license file will be validated and if everything is in order you should see a message similar to the following:



- Click the button labeled OK. A screen similar to the following will be displayed. It will now contain information about the products you have licensed and registered on this server.





Note: The fields labeled *Used / Entitled* will initially show a value of "0" for the number of seats used. This number will increase as products are registered with this XMLS server.