



## XMetaL® Author Enterprise 7.0

In today's highly competitive and tightly regulated markets, your organization can't leave information quality and consistency to chance. The content your organization produces including product manuals, policies and guidelines, or regulatory filings must be consistent, accurate and of high quality. Organizations failing to meet these requirements run the risk of customer defection, excessive service costs and the potential for fines and lost revenue from noncompliance with regulations.

### Why use XMetaL for structured XML authoring?

Although word processors are useful for writing letters and ad-hoc documents, they cannot publish cleanly in multiple formats, manage very large documentation sets, or efficiently produce customized documents. With XMetaL Author Enterprise 7.0, organizations can create structured XML content and repurpose higher-value information products into the myriad of languages and formats your customers demand.

XMetaL Author enables authors to create valid XML through a familiar, easy-to-use word-processing interface that ensures documents conform to OASIS and W3C document standards, industry standards, and your own corporate standards. With XMetaL Author, organizations can:

- Automate publishing to ensure consistency of style and content across multiple delivery channels, and to eliminate the need for costly manual reformatting of translated content. With formatting automated by style sheets, authors can focus on the content itself, not on applying and tweaking formatting.
- Enforce standard use of regulated or branded language.
- Publish in multiple formats, such as print, online help, and web pages optimized for desktop computers or for mobile devices (ePUB and Kindle).
- Reuse a piece of content in many different documents.
- Customize and personalize content for different audiences, regions, contexts of use, and product variations.
- Reduce translation costs by localizing only the changed parts of a document, rather than complete deliverables.
- Ensure that changes to documents satisfy regulatory and legal requirements.

### Concentrate on your content, control your markup

XMetaL Author ensures that XML documents are well-structured and valid, while providing an environment in which authors can focus on creating content. Its flexible interface and multiple views allow authors to work in a word-processor-like user interface, while providing power users access to all aspects of a document's structure and code.

- The WYSIWYG-like 'Normal' view enables authors to focus on their content without visual clutter.
- 'Tags-On' view also presents documents with WYSIWYG-like styling while displaying graphical XML tags to facilitate more direct manipulation of document structure.
- In 'Plain Text' view, power users can directly modify the conveniently color-coded XML source.

### Enjoy standard word processor conveniences

Authors feel immediately at home with familiar word processing features:

- Standard features include thesaurus, search and replace, unlimited levels of Undo and background spell checking with configurable auto-correction.
- A detailed change-tracking feature enables authors to see what changes have been made and by whom, and to accept and reject changes.
- Edit bulleted lists, numbered lists, and tables with familiar toolbar buttons, menu commands, and shortcut keys.
- Insert new elements automatically by pressing Enter

### Work seamlessly with embedded data, rich media, and equations

Keep facts up-to-date by pulling dynamic data into your content directly from databases, spreadsheets, and enterprise applications. For example, using XMetaL Author you can integrate information about product specifications and current prices into a datasheet or catalog.

- Browse to and select images to display in documents. Display images in PNG, GIF, JPEG, BMP, TIFF, and EPS; formats with little or no configuration required.
- Integrate any ActiveX® control into the editor so that authors can view images and rich media of any type within their document, and can right-click an object to edit it.
- Reuse content with XML Inclusions (XInclude) via APIs that update/show/hide/export content in-line, similar to the DITA conref mechanism.
- View and edit mathematical equations in MathML using the optional integrated MathFlow Editor from Design Science.

### Improve author productivity with time-saving shortcuts

With XMetaL Author, you can add and remove menus, dialog boxes, keyboard shortcuts, toolbar buttons, forms, panes, and scripted processes for a completely optimized authoring interface. Here are just some of the many time-saving possibilities:

- Configure XMetaL Author to insert the most likely next element when the author presses the Enter key.
- Script XMetaL Author so that when pasting formatted clipboard content, such as content from Microsoft® Word, clipboard contents are transformed into appropriate markup for your DTD or XML Schema.
- Script XMetaL Author to insert an element, change an element type, or apply a set of attributes, when the user presses a specific keyboard sequence.
- Display a contextual menu when the author right-clicks a particular element type.
- Create an Image Properties dialog box and have it display when the user double-clicks an image.
- Provide a simple user interface with only the commands that your writers need to use. Hide menu items, toolbar buttons, and options that they don't need.

Custom forms and dialog boxes, created in XMetaL Developer, can be deployed in XMetaL Author in many ways. They can be included in document

templates, opened via a toolbar button, menu command, or keyboard shortcut, or displayed automatically for specific events such as opening or closing a document.

### Choose the best content management option for you

XMetaL Author works well with a wide variety of content storage and content management technologies, for any budget and any organization's requirements. Small teams often choose to store their files on the local file system or use source-code control systems such as the open-source Subversion® (SVN). Teams with more extensive requirements for content management and translation management can choose from more than ten industry-leading enterprise content management systems for which fully vendor-supported integrations with XMetaL Author are available. By supporting virtually any type of repository, source control, or content management system, XMetaL Author lets you choose the right repository for your organization realize the cost and time advantages of using repositories and file systems already in place.

- Simplify authors' workflow with simple, drag and drop interaction between the authoring interface and content repositories.
- Promote content re-use with sophisticated reference browsing, contextual filtering and automatic component creation.
- Accelerate custom integrations with high-level APIs and out-of-the-box connectors that support both open-source and commercial systems.
- Allow authors to view local content (cached checked-out content) alongside related or referenced content stored in the repository.
- Additional CMS support may be available through other vendors or JustSystems partners, please contact us for more information.

### Customize and extend with ease

With over 1000 fully documented APIs (events, objects, properties and methods) and robust support for standards, XMetaL Author is favored by developers for the ease with which customizations can be developed and maintained. For details, see the XMetaL Developer Datasheet here: [http://na.justsystems.com/files/XMetaL\\_ProductOverview\\_Developer.pdf](http://na.justsystems.com/files/XMetaL_ProductOverview_Developer.pdf).

- Write script and macros in any COM-based scripting language, such as JScript, VBScript, Perl, or Python.
- Modify the way documents are displayed to authors, using standard CSS style sheets.
- Customize the semantics and behaviors

- of elements with an easy-to-use property-based interface.
- Extend XMetaL Author using interfaces for COM and Java™, and development languages such as C++ and C#.

**Manage configurations to ensure high productivity**

Typically deployed in work groups and teams of content creators, XMetaL Author provides a number of features for developing authoring applications and managing the deployment of the authoring environment by the IT team.

**Cross-File Operations – NEW in 7.0**

XMetaL Author’s cross-file operations allow authors to perform operations in all files in a directory, or all topics in a DITA map, or all open documents. Available operations include:

- Find text or markup (including advanced markup and XPath search capability [NEW in 7.0](#))
- Spell Check
- Word Count
- Validate References
- Detect Duplicate IDs
- Accept All Change

In addition, the extensible cross-file capability allows customizers to create custom scripts to be performed as cross-file operations. Results of all cross-file operations are presented in a new “Results” window that allows authors to navigate through results, automatically opening files and displaying highlights as necessary.

**Work in any language for today’s global market**

Standard Unicode support allows you to author in almost any language, including Cyrillic, Eastern European, and Asian languages. Spellchecking dictionaries are included for 30 languages.

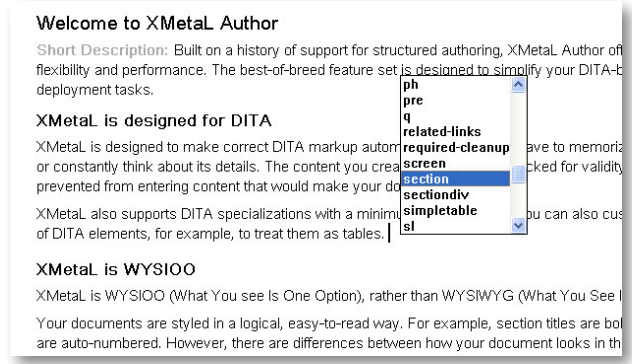
**Write Naturally**

XMetaL Author does more than any other DITA editor to enable you to write naturally and efficiently, allowing you to focus on your content without having to memorize element and attribute names. Authors can write productively in XMetaL’s word-processing-like Normal View, which shows a clean and realistic display of the document without tags. They can easily switch to XMetaL’s Tags On view, combining WYSIWYG-like styling with graphical XML tags, for viewing more details of document structure. A sophisticated array of features makes it natural for writers to create valid DITA topics, whether they are DITA experts or completely new to DITA:

- Get started quickly with topic templates, allowing authors to start with your most commonly-used structures and instructions

already in place.

- Insert the element you most likely need next simply by pressing the Enter key.
- Press Ctrl+Enter for a “look-ahead” element list popup [NEW in 7.0](#)



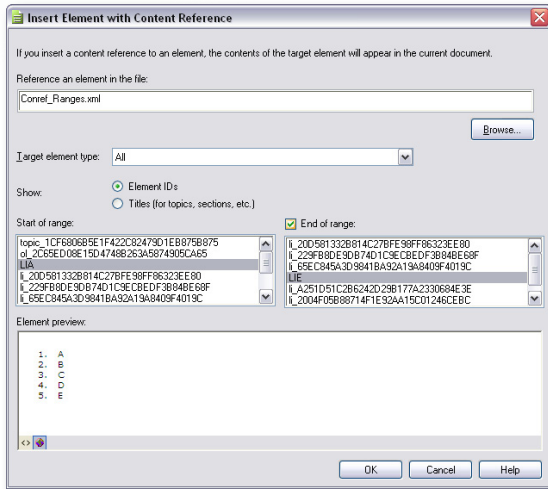
*The popup look-ahead element list is an XMetaL Assistant that enables authors to insert new elements not only at the cursor position but even beyond the hidden tags.*

- Use familiar keyboard shortcuts to make text italicized, bold, or underlined, and for inserting index markers.
- Use user-friendly dialogs to insert images, index markers, cross-references and more.
- Use toolbar buttons to create bulleted or numbered lists with a single click.
- Put the elements you want where they are valid, without authors having to memorize complex DITA structural rules, using the “Smart Paste” and “Smart Insert” features.
- Copy multiple paragraphs, lists, and even tables from Microsoft® Word or other formatted documents, and paste them into DITA topics. XMetaL’s unique Paste capability transforms complex formatting into valid DITA content.

**“Write once, use many times” with DITA conref and keyref**

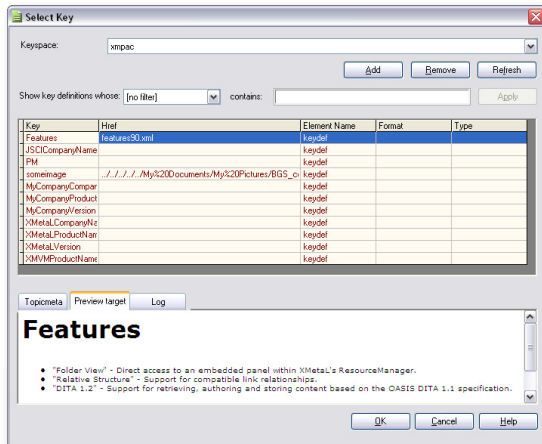
With DITA 1.2, XMetaL Author Enterprise 7.0 expands reuse potential for authors with DITA conref push, conref range, and keyref.

DITA conref (content referencing) is for ensuring consistent terminology and wording for content such as product descriptions, legal boilerplate text, and warnings. [NEW in 7.0](#) Conref range allows authors to reference a series of elements (steps, bullets, paragraphs, etc.) without having to reference each individual element.



Conref range allows authors to reference a series of elements without having to reference each individual element.

Keyref (key referencing) adds indirect referencing capability to DITA. **NEW in 7.0** With keyref, authors can avoid updating or duplicating individual topics, instead defining keys in a map that point to alternate variations of content. Automated key space management allows authors to manage key spaces for DITA maps. When authors open a topic, it is automatically assigned a key space.

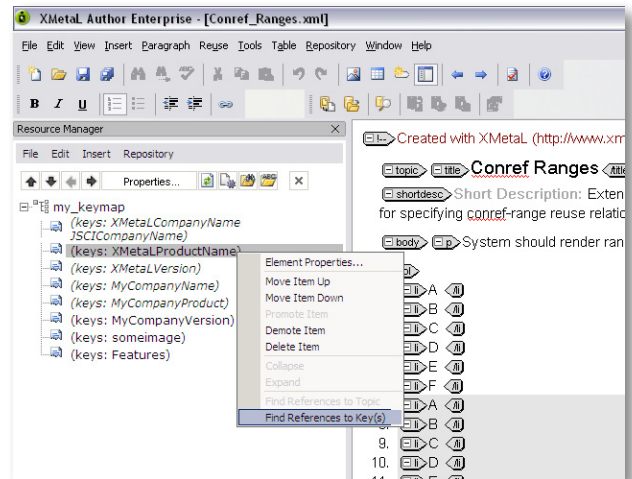


Automated key space management enables authors to automatically assign a key space once they open a DITA topic.

With XMetaL Author, authors can attach a conref to an existing element or insert an element with a conref. DITA makes the distinction between local content (text and graphics present in the element) and referenced content (text and graphics referred to by an element). Authors have the option to display local or referenced content. With conrefs and keyrefs, authors can make any changes to the fragment and have these changes automatically be reflected in all documents when they are republished. XMetaL

Author's depth of support for content referencing is unsurpassed:

- Create key and content references with an easy browse-and-click user interface. XMetaL automatically ensures that all content references are valid according to the rules of the DITA Architectural Specification.
- View documents with referenced content displayed as they would appear to your readers.
- Right-click on referenced content to open and edit the target file.
- Work with unlimited levels of nested content references (references to fragments containing other content references).



Authors can "Find References to Keys Used" in a directory, in all topics in a DITA map, or in all open documents.

### Create customized documents with conditional text

DITA conditional text enables you to create customized versions of documents for different audiences and product variations, from a single set of source files. With XMetaL Author, you can quickly configure a custom list of names of audiences, products, platforms, and other types of conditions. Authors can use checkboxes to apply your organization-specific conditions to selected text or to any valid DITA element, and display DITA topics and maps with configurable, easy-to-read color-coded highlights to keep track of conditional content. When creating deliverables, a "Show/Hide Conditional Text" dialog makes it easy to create exactly the version of the document you want, even if your files contain content with multiple and overlapping conditions.

### Powerful, visual Map Editor

XMetaL Author makes it easy to add new or existing topics to DITA maps or bookmaps, and you can even

add multiple topic files at once by drag-and-drop. XMetaL's features for editing DITA relationship tables give you a central location for creating and managing topic-to-topic "See also" links.

**NEW in 7.0** Version 7.0 has numerous improvements to the Map Editor including support for simple editing of specialized maps, new keyboard shortcuts for common Map Editor operations, searching in DITA maps, running cross-file operations, navigating and moving selections via cursor keys, deleting selections and editing the properties of a selection.

### Publish to multiple formats directly from the desktop

XMetaL Author provides several different publishing options to suit your specific needs, using an extensible publishing framework as a low-cost alternative to proprietary publishing systems.

- Publish DITA content directly from authors' desktops using the fully integrated and automatically-installed DITA Open Toolkit and the RenderX XEP Engine, or virtually any other publishing engine. XMetaL's seamless integration with the DITA Open Toolkit is enhanced further with features that increase output quality and configurability completely backed by XMetaL Technical Support.
- Publish to a variety of outputs expected by your customers, including HTML, PDF, ePUB (**NEW in 7.0**), Kindle (**NEW in 7.0**), Microsoft® HTML Help (CHM), Eclipse Help, Java Help, Oracle Help, WebHelp, and more. Fully customizable style sheets and parameters enable you to publish documents with the formatting you need, in any language.
- Generate automatically-sorted indexes, glossaries, and tables of contents.
- Shorten the learning curve by hiding the complexity of publishing operations from non-technical users with easy-to-understand menus and dialogs.
- Background generation of output enables content to be output using the DITA Open Toolkit in the background allowing content authoring to continue during output.
- WebHelp output format - similar to CHM (providing an index, table of contents and search) but works across multiple platforms and browsers.

### Handle specialization and customization with ease

DITA is designed for specialization, the ability for organizations to extend it for their specific requirements. XMetaL Author supports all DITA 1.2

document types out-of-the-box, can be configured in minutes to support any valid DITA specialization, and works seamlessly with extensions for integrating rich media and equations. With standard CSS-based document display, over 1000 APIs, and the flexibility to add custom menu items and dialogs, XMetaL Author is by far the most adaptable DITA editor on the market.

### XMetaL Author Enterprise 7.0 Licensing Options – NEW in 7.0

With XMetaL Author Enterprise 7.0, customers have two licensing options:

- **Per-seat Licensing:** When a per-seat license is purchased, each copy of XMetaL installed is registered with an XMetaL Licensing File. The total number of computers running the software cannot exceed the number of per-seat licenses purchased.
- **Concurrent (or Floating) Licensing:** When a concurrent license is purchased, XMetaL can be installed on any number of computers. The number of users running XMetaL at the same time cannot exceed the number of concurrent licenses agreed to at the time of purchase.

Find more information about XMetaL licensing options here: <http://na.justsystems.com/content-support/licensing-options>.

### Built to last on open standards

XMetaL Author offers unparalleled support for industry standards and interoperability with enterprise applications. Ensure a familiar work environment and avoid costly, locked-in proprietary technologies by taking advantage of standard programming languages, development environments, style sheets, access protocols and all major XML specifications:

- DITA
- DocBook
- SVG
- XPath
- CALS Table Editing and Rendering
- MathML
- XML Namespaces
- W3C XML Schema
- W3C DTD
- W3C XML Inclusions
- SGML
- DOM
- Unicode
- Scripting (JScript®, VBScript, Perl, Python)

- Development Languages (Java, C++, C#)
- XSL
- CSS
- HTML Table Editing and Rendering
- OASIS Catalogs

**Feature Matrix**

<b>Structured Authoring</b>	
Templates to guide structured authoring	✓
On-the-fly XML validation	✓
Smart Insert	✓
Document-type specific assisted authoring: dialogs, menus, toolbars, styling and editing behaviors	✓
Views: WYSIWYG, tags-on/off, source code	✓
Search & Replace	✓
Copy/Paste from Microsoft® Office (Word & Excel)	✓
Languages supported: spell-checker	30
Languages supported: thesaurus	11
Background spellchecking and auto-correction	✓
Scale images in authoring interface	✓
Perform cross-file operations including Find and Spell Check in Files	<a href="#">NEW in 7.0</a>
Extensible cross-file capabilities	<a href="#">NEW in 7.0</a>
Advanced search capability for regular expressions, sophisticated markup searching, or arbitrary XPath expressions.	<a href="#">NEW in 7.0</a>
In-place, look-ahead element list XMetaL Assistant	<a href="#">NEW in 7.0</a>
Attribute Inspector (AI) panel alphabetically or use the declaration-order as provided by the DTD	<a href="#">NEW in 7.0</a>
<b>DITA Support</b>	
Support for DITA 1.2 authoring	<a href="#">NEW in 7.0</a>
Support for DITA 1.2 publishing (using DITA Open Toolkit v1.5.4)	<a href="#">NEW in 7.0</a>
Automatic generation of topic & element IDs	✓
DITA map editing	✓
Background generation of DITA Open Toolkit Output	✓
Relationship table editing interface	✓
DITA specialization inherited behaviors in authoring interface	✓
Context menus within Map Editor	<a href="#">NEW in 7.0</a>
Simple editing of Bookmap DITA Maps in Map Editor	✓
Simple editing of Specialized DITA Maps in Map Editor	✓
Consistent DITA specialization packaging with standardized overrides	✓
WebHelp DITA output format supporting index, table of contents and search	✓
DITA compliant conditional text	✓
Automatic DITA specialization configurations	✓
Navtitle element support with grid view and markup preview	<a href="#">NEW in 7.0</a>
<b>Content Reuse</b>	
Entity references	✓
Reusable components	✓
Conref range support	<a href="#">NEW in 7.0</a>
DITA key references	<a href="#">NEW in 7.0</a>
Validation of key references	<a href="#">NEW in 7.0</a>
DITA content references	✓

Validation of content references	✓
Automatic generalization of content references	✓
DITA content reference preview from CMS	✓
W3C XML Inclusions (XInclude)	✓
Hide/Show/Refresh individual content references	✓
UI for Topic-to-topic content references	✓
Hide/Show/Refresh individual key references	NEW in 7.0
Visualization of compound documents	✓
Display referenced content inline	✓
User-controlled styling of conditional text	✓
<b>Collaboration</b>	
Integrated collaborative reviewing	✓
Single-click change merging from reviewers	✓
<b>Publishing</b>	
Embedded DITA Open Toolkit	✓
Technicals for DITA Open Toolkit	✓
Graphical interface to DITA Open Toolkit	✓
Single-click preview of final output	✓
Enhanced default bookmap rendering to PDF	✓
Parameterized configuration of PDF output	✓
Configuration guides for PDF, HTML, CHM	✓
Glossary merging and sorting	✓
Publish map to single HTML file	✓
Publish to HTML	✓
Publish to mobile formats including ePUB and Kindle (DITA For Publishers plugin updated 8 January 2012)	NEW in 7.0
Publish Eclipse content or Help	✓
Publish to Help, Online User Assistance formats (various, including HTML Help/CHM, Java)	✓
Generate table of contents, index	✓
Embedded RenderX XEP 4.18 build 20100322 (FO engine)	✓
Integrate with other publishing engines	✓
<b>Integration &amp; Deployment</b>	
Documentum D6.5 SP1/SP2/SP3 or D6.6 integration available and configured for DITA out-of-the-box	✓
CMS interaction inside XMetaL Author interface	✓
Integration with virtually any repository through one interface	✓
Support for 'Treat as Image' and 'Treat as Link' to provide integration hooks	✓
Support for various types: file systems, databases, XML repositories, source control systems, CMS	✓
Smart synchronization: preview work-in-progress	✓
Data import wizard (ODBC data source)	✓
Window 64-bit-compatible	NEW in 7.0
Support for Citrix deployments	✓
Concurrent (or floating) licensing option	NEW in 7.0
<b>Extensibility</b>	
Configurable interface, adaptable to any task	✓
Macros for repetitive tasks	✓
Smart stylesheet and customization generator	✓
Extensive set of APIs: COM, Java	✓
XMetaL Assistants	NEW in 7.0
Custom cross-file operations	NEW in 7.0

### System Requirements

- Operating System: Windows Server 2008, Windows XP, Windows Vista, or Windows 7 (32-bit and 64-bit)
- Processor: Pentium® 133 MHz
- Memory: 256 MB of available RAM (512 MB recommended)
- Color display: Minimum resolution of 1024 x 768
- Hard disk space: Minimum 500 MB of disk space (800 MB recommended)
- Microsoft® Internet Explorer, version 6.00.2600.0000 or later



<http://www.justsystems.com>

North America:  
Phone: +1.866.793.1542  
Email: [ContactSales-NA\[at\]justsystems.com](mailto:ContactSales-NA[at]justsystems.com)

Europe:  
Phone: +44 (0) 1462 889 082  
Email: [ContactSales-EMEA\[at\]justsystems.com](mailto:ContactSales-EMEA[at]justsystems.com)

International: +1.604.697.8705

### About JustSystems

JustSystems is a leading global software provider with over three decades of successful innovation in office productivity, information management, and consumer and enterprise software. With over 2,500 customers worldwide, the company is continuing a global expansion strategy based on its XMetaL content lifecycle solutions, the world's most complete and user-friendly XML authoring tool. JustSystems has been received many industry accolades including: KMWorld's 100 Companies that Matter in Knowledge Management in 2012, EContent 100 Companies that Matter the Most in Digital Content in 2011, KMWorld's Trend Setting Product of 2011, Software Magazine's The Software 500 of 2008, and many others. Major strategic partnerships include IBM, Siemens, and EMC. For more information, visit: [www.justsystems.com](http://www.justsystems.com).

© Copyright JustSystems  
All rights reserved. JustSystems and the JustSystems logo are trademarks or registered trademarks of JustSystems Corporation in the United States and other countries. XMetaL is a trademark of JustSystems Canada, Inc in the United States and other countries. Other company, product and service names may be trademarks or service marks of others.